

ELECTRONIC FUEL INJECTION

HIGH-FLOW RATE FUEL INJECTOR SETS

PCM calibration data for each model of injector is available on our website.

PART NUMBER (SETS OF 8)	FLOW RATE	BODY STYLE	IMPEDANCE	LENGTH	CONNECTOR
M-9593-C302*	19 lb./hr.	EV1	11-18 ohms	L	Jetronic/Minitimer
M-9593-M23*	23 lb./hr.	EV6	11-18 ohms	L	USCAR
M-9593-A302*	24 lb./hr.	EV1	11-18 ohms	L	Jetronic/Minitimer
M-9593-B302*	30 lb./hr.	EV1	11-18 ohms	L	Jetronic/Minitimer
M-9593-T46*	34 lb./hr.	EV6	11-18 ohms	L	USCAR
M-9593-M39*	39 lb./hr.	EV6	11-18 ohms	L	USCAR
M-9593-F302*	42 lb./hr.	EV1	11-18 ohms	L	Jetronic/Minitimer
M-9593-G302*	47 lb./hr.	EV14	11-18 ohms	M	USCAR
M-9593-LU60*	60 lb./hr.	EV6	11-12 ohms	L	USCAR
M-9593-E303*	160 lb./hr.	EV1	4-6 ohms	L	Jetronic/Minitimer

All injector flow rates are quoted at a delta pressure of 39.15 psi. To convert to a delta pressure of 43.5 psi, multiply flow rate by 1.054.

CONNECTORS



Jetronic/
Minitimer

USCAR

INJECTOR ADAPTER KITS

M-14464-U2J

- Adapts USCAR style harness to Jetronic/Minitimer style injector
- Packaged in sets of (8)



M-14464-A8*

- Adapts Jetronic/Minitimer style harness to USCAR style injector
- Packaged in sets of (8)



M-14464-A8 shown

BODY STYLE

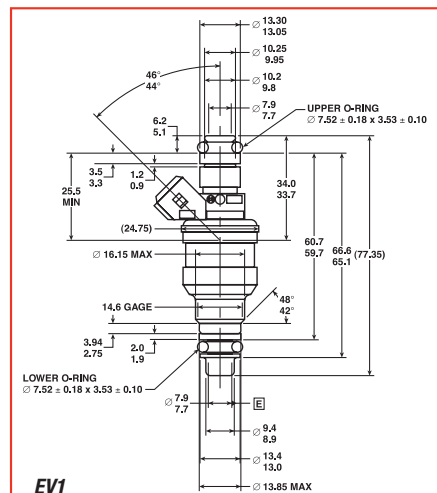


EV1

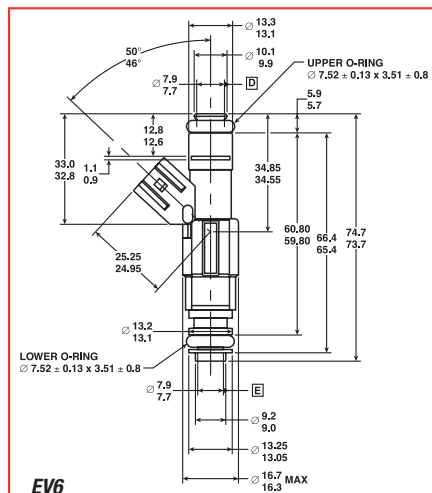
EV6

EV14

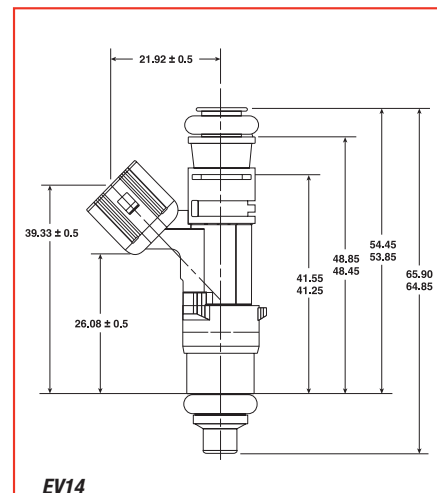
LENGTH



Long



Long



Medium